

# Excel at Our Clinic

9,000 ft<sup>2</sup> facility. 5 health professionals with the latest training. #1 health clinic is **Excel**.



At **Excel**, your health is our top priority. From the front desk to your therapist, our staff works together to bring you the best possible experience. Plus, your treatments will be one on one and specifically designed for you and your needs.



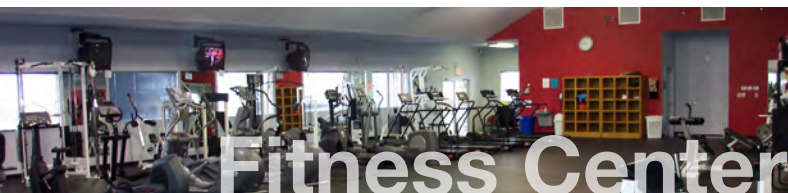
Let our Occupational Therapist, Andrea, get you back to things that are most important to you. Any pain or injuries to your hand, wrist or elbow can be expertly treated at **Excel** and get you back to work, your family or the activities you enjoy the most.



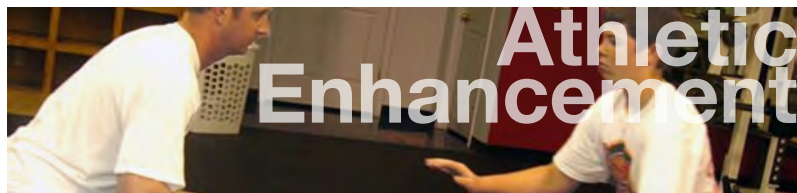
Orthotics are designed to treat more than just foot and ankle pain. Getting casted for custom foot orthotics can relieve pain in the knee, hip and spine. Let the foot orthotic experts at **Excel** cast a custom pair for your non-athletic or active needs.



Excel's staff will keep you in the game and quickly get you back in it when injured. Our staff of Certified Athletic trainers are highly educated in the latest sports medicine practices. Plus, we are the only facility in mid-Missouri that is Kinesio Taping certified.



**Excel** has the best fitness facility in Boonville. We offer everything other facilities do and more. The fitness center is open 24 hours, 365 days a year. Our personal training and medical expertise will provide you with the best exercise program for you.



Excel's athletic enhancement program is designed for athletes of all skill levels, age 12 and up. Groups of 4 or less will work on specific exercise programs which are designed with the athlete's goals in mind. Athletes will see improvements only after a few sessions.



Pilates is a fitness regimen that combines strengthening and stretching exercises designed to work the entire body in fluid movements; a great core stabilization class!

**Excel** [excelpt.net](http://excelpt.net) • 660-882-6115  
PHYSICAL THERAPY • OCCUPATIONAL THERAPY • FITNESS CENTER